

# 205 SERIES REGULATORS



The 205 Series regulators are intended for secondary pressure control of non-corrosive, high purity or liquefied gases (up to grade 4.5) or as point of use pressure control in high purity gas distribution systems.

## Typical Applications

- Gas Supply Purging
- Point-of Use Laboratory Systems
- Bulk Gas Distribution Systems
- Control of Cryogenic Gases
- Liquefied Hydrocarbon Gas Control
- Gas Supply Purging



205 3021-01-TF4 shown

## Features

**Standard Relief Valve** protects diaphragm and gauge

**316L Stainless Steel Diaphragm** prevents inboard diffusion

**CAPSULE® Seat Technology** increases product serviceability and life

**3000 PSIG (210 BAR) Inlet Pressure Rating** permits safe use with high pressure cylinders

## Materials and Specifications

**Maximum Inlet Pressure (bare body):** 3000 PSIG (210 BAR)

**Body:** Chrome-plated forged brass

**Bonnet:** Chrome-plated, die cast zinc

**Gauges:** 2 1/2 in (68 mm) diameter plated case

**Seat:** PTFE

**Filter:** 10-micron sintered bronze

**Temperature Range:** -40°F to 140°F (-40°C to 60°C)

**Diaphragm:** 316L Stainless steel

**Cv:** 0.28

**Helium Leak Integrity**  $1 \times 10^{-8}$  scc/sec

**Internal Seals:** PTFE

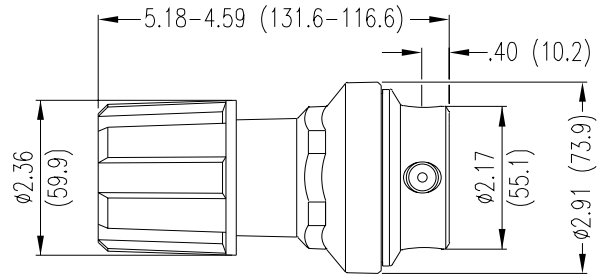
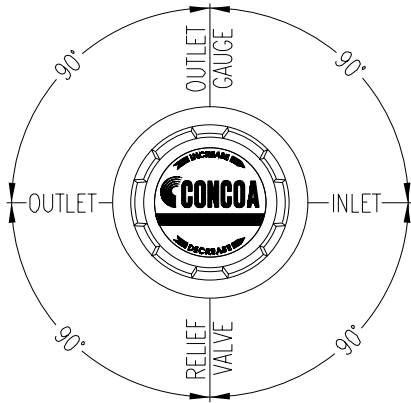
**Ports (bare body):** 1/4 in FNPT

**Conformances:** Cleanliness meets or exceeds CGA G-4.1; PED 2014/68/EU; ANSI/ASME B40.1; CRN OH5216

# 205 SERIES REGULATORS



## Installation Dimensions



## Ordering Information

205	A	B	C	D	-CON	Options	
Series 205	Outlet Pressure	Outlet Gauge	Inlet Gauge	Outlet Assemblies	Assembly Gauges	Inlet Connections	Installed Options
	<b>1:</b> 0-15 PSIG (0-1 BAR)	0-30 PSIG/ 0-2 BAR	<b>0:</b> None	<b>0:</b> 1/4" FPT port	<b>0:</b> Bare body	<b>000:</b> 1/4" FPT	<b>M:</b> Protocol station
	<b>2:</b> 0-40 PSIG (0-3 BAR)	0-60 PSIG/ 0-4 BAR		<b>1:</b> 1/4" MPT	<b>1:</b> Standard assembly (PSIG/kPa gauges)	<b>TF2:</b> 1/8" tube	<b>Q:</b> Protocol purge station
	<b>3:</b> 0-120 PSIG (0-8 BAR)	0-200 PSIG/ 0-14 BAR		<b>2:</b> 1/4" tube fitting	<b>2:</b> Standard assembly (BAR/PSIG gauges)	<b>TF4:</b> 1/4" tube	
	<b>4:</b> 0-200 PSIG (0-14 BAR)	0-400 PSIG/ 0-27 BAR		<b>3:</b> Diaphragm valve 1/4" tube fitting	<b>6:</b> Mirror image assembly (PSIG/kPa gauges)	<b>TF6:</b> 3/8" tube	
	<b>5:</b> 0-15 PSIG (0-1 BAR)*	0-30 PSIG/ 0-2 BAR		<b>4:</b> Diaphragm valve 1/4" MPT	<b>7:</b> Mirror image assembly (BAR/PSIG gauges)	<b>M06:</b> 6mm tube	
	<i>*With redline for acetylene use</i>			<b>5:</b> Needle valve 1/4" MPT			
				<b>6:</b> 1/8" tube fitting			
				<b>7:</b> 3/8" tube fitting			
				<b>8:</b> Diaphragm valve 1/8" tube fitting			
				<b>9:</b> Diaphragm valve 1/4" FPT			
				<b>A:</b> 3/8" BSP RH fitting			
				<b>B:</b> Diaphragm valve 3/8" tube fitting			
				<b>C:</b> 3/8" BSP LH fitting			
				<b>D:</b> 6mm brass hose barb			
				<b>G:</b> 1/8" stainless steel tube fitting			
				<b>H:</b> 1/4" stainless steel tube fitting			
				<b>M:</b> 6mm tube fitting			
				<b>S:</b> Diaphragm valve 6mm tube fitting			

# REGULATOR FLOW CURVES



## Flow Curves for 205, 206 Series

